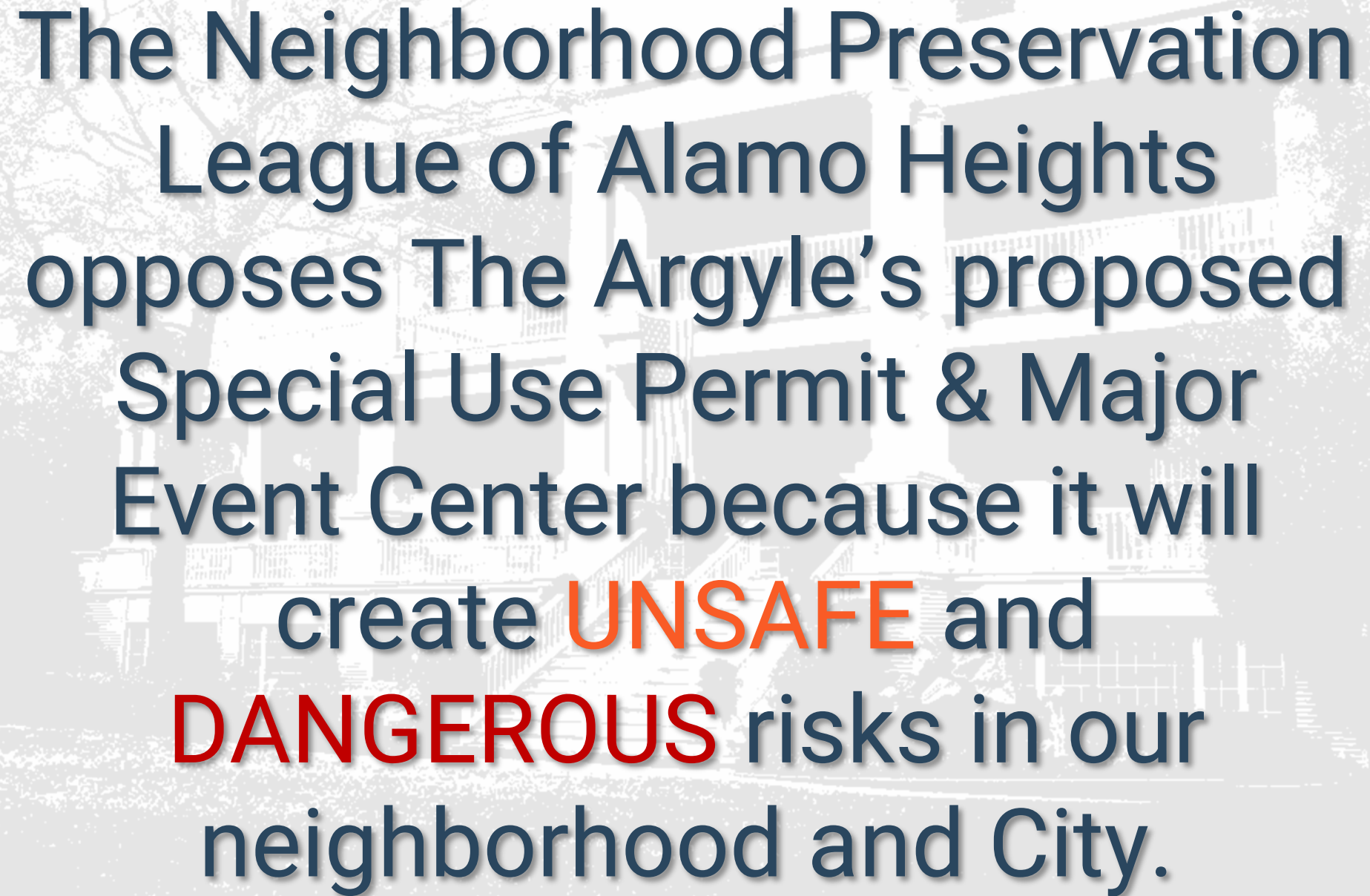




**ARGYLE
EVENT
CENTER**

SAVE OUR NEIGHBORHOOD





The Neighborhood Preservation
League of Alamo Heights
opposes The Argyle's proposed
Special Use Permit & Major
Event Center because it will
create **UNSAFE** and
DANGEROUS risks in our
neighborhood and City.

The Argyle

Alcohol flows freely

A Major Event Center will mean exponentially more events and more drinking, creating more DANGEROUS risks



EVENTS CREATE TRAFFIC CONGESTION WHICH is DANGEROUS FOR children, walkers and bicyclists



OUR NEIGHBORHOOD IS FULL OF WALKERS AND BICYCLISTS



An accident waiting to happen?

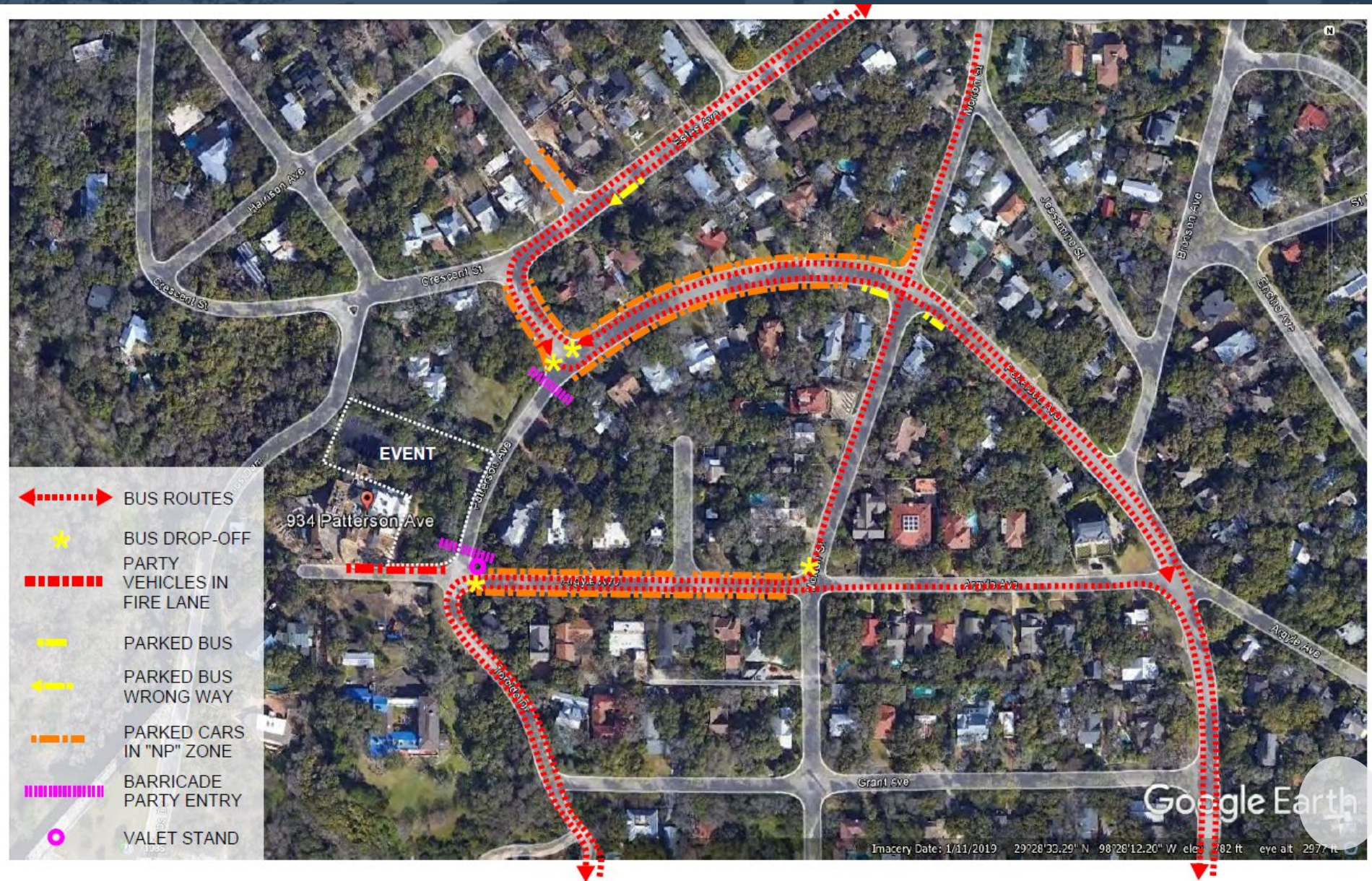
The City **cannot** prohibit Argyle Members and Guests from parking on neighborhood streets.....



What does a 1,200-person event look like?

Fiesta Queen's Ball 2022

Dozens of
Buses = 1
bus every 3
minutes on
Patterson





**COMMERCIAL
VEHICLES ON
RESIDENTIAL
STREETS will
DRAMMATICALLY
INCREASE**

Garbage trucks begin service to The Argyle as early as 6:30am.....EVERY DAY

Purveyors, Vendors and Suppliers, Decorating, etc. arrive all day.

The SUP will allow **unlimited events of 249 attendees plus** an additional **56 events of 250-1,200** every year. All of this is on top of their existing dining functions for 300. This is an exponential increase over the current activities.





Creates unsafe traffic conditions

TRUCKS, VALETS &
RIDESHARES will
*CONTINUE to
IMPEDE the FLOW
of TRAFFIC on our
RESIDENTIAL
STREETS*



Delivery trucks for set up of events, impeding flow of traffic



Valet parking impeding, the flow of traffic



**LUNCHEON
EVENT GUESTS
will not park in
remote lots, or
use Valet
service.
UNSAFE
CONDITIONS
WILL CONTINUE**



City Garbage Truck doesn't
have access to trash cans

Cars had to BACK UP on
Patterson to allow
City Garbage Truck
access between Argyle
guest parking





THE ARGYLE HAS NO PERMITS TO BLOCK PARKING ON PATTERSON AVE.



City street “claimed”
by Argyle everyday.



During events no one can park
in front of Argyle only in front
of neighborhood residences



OTHER PARKING PROBLEMS



401 Torcido residential property
being used illegally for
commercial parking



The City refusing to enforce
"No Parking" violations by
Argyle Guests

NOISE IMPACT ON THE NEIGHBORHOOD



Isn't it true that all the noise will move inside if they build the **MAJOR EVENT CENTER**?

NO! The SUP prohibits amplified music outside, but amplified sound is allowed on the lawn and under tents which are still allowed. The proposed design of the major event center has two walls of glass doors that open directly onto terraces facing the neighborhood.....the neighborhood will still hear the PARTY!

According to
The Argyle

THE EVENT
CENTER IS
NECESSARY
BECAUSE.....

.....They have an Existential Financial Crisis

From the February 16, 2022 Letter to Argyle Members

"Another purpose for The Hall is a very serious financial concern which simply is existential to The Argyle.....

*The Argyle relies heavily on members' private events for its financial viability. Without them, there would have to be some combination of a variety of **undesirable options**, including member assessments, significant dues increases, minimum spending requirements, significant increased food and beverage prices, or even vastly increasing the size of our membership."*

The Argyle wants to solve their SELF-CREATED "Existential Financial Crisis" on the back of the neighborhood

Contact our City Leaders and let them know that our city of beauty and charm is more important than a party house.